



Alchemy

with artist

***Mellessa
Raymond***

Catalogue

Exhibition

—

**25 September
— 21 October**

For sales enquiries, please email
info@ambushgallery.com

LIBERTY PLACE
161 CASTLEREAGH ST. THRU 242 PITT ST.

ambUSH



The true meaning of the philosopher's stone was lost in modern time. The alchemical practice and the elusive philosopher's stone were a metaphor for wisdom and the art of possibility, not the pursuit of creating gold.

Sydney-based artist Mellessa Raymond explores the transformative and regenerative power, of true alchemy in her latest exhibition. *"My paintings are like putting a magnifying glass onto myself, and turning it inwards..."*

Mellessa was inspired by the writings of one of her favourite authors.

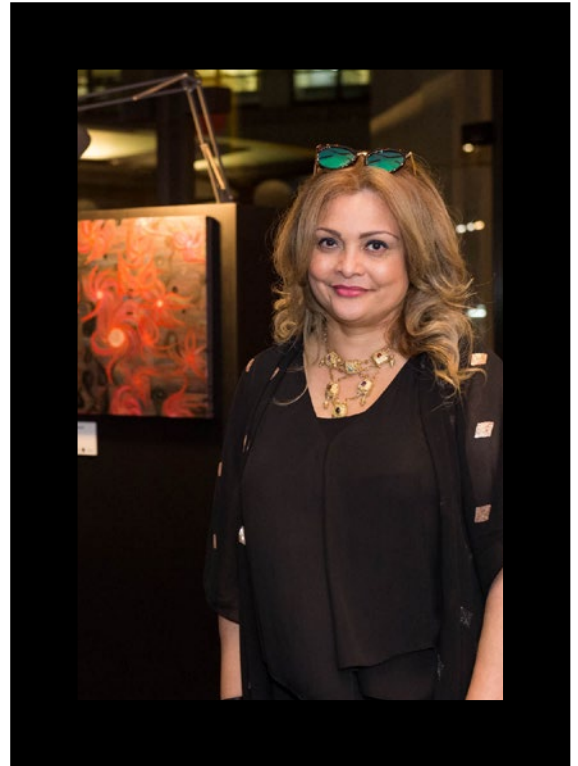
"One alchemist announced that one grain of this powder would transmute into purest gold one hundred thousand times its own weight. But his readers did not realise that this powder is WISDOM, one grain of which can transmute all the ignorance in the World. Nor did the reader properly understand that the PHILOSOPHER'S STONE IS KNOWLEDGE, the great miracle worker, or that the elixir of life was TRUTH, which makes all thing new."

~ Manly P. Hall (A Monthly Letter, April 1937)

These paintings have been created over the past 4 years, predominately while the bushfires were raging along the east coast of Australia in 2019-20. The paintings reflect a myriad of emotions that Mellessa experienced during this time. These emotions are reflected in the diverse works that she presents.

Mellessa, along with aMBUSH Gallery, invites you to discover the wisdom and magic of Alchemy.

Mellessa Raymond



Mellessa Raymond is an artist, born in Colombo, Sri Lanka, living in Sydney, Australia. Her artwork tells a visceral story of her experience with chronic illness, the health care system and self empowerment. Since 2006, Mellessa has had three brain tumours and five surgeries leading her to face herself, her reality and eventually, leading her back to her love for art and painting.

Her vibrant and audacious personality, along with her love for astronomy and fascination with the cosmos is apparent in the luminescent, vibrating dot clusters overlaid upon a backdrop of deep indigos - evoking the depth and majesty of a starry night. Her process depends on being in the present moment, building layer upon layer and allowing her inner voice and intuition to guide the brush.

Mellessa describes her art making as a purging and expulsion of raw emotion and feeling. The result is

an artefact of true beauty, depth and honesty born out of adversity and human experience. Mellessa realised that catharsis through art was an experience she could share with others on similar plights. In 2018 Mellessa established Quantrelle - a community drawn together by the common desire to create a safe and supportive space for creative expression, healing and self discovery.

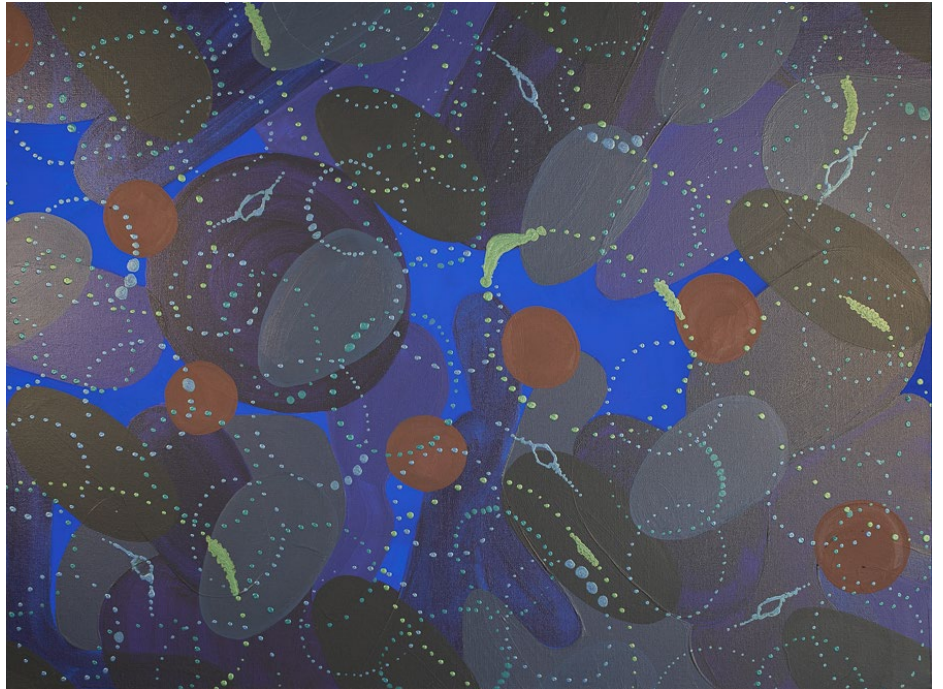
Microcosm

“To reveal that form, reveals the void, and to see that void reveals the form.” – Alan Watts

Encapsulating in miniature the characteristics of something much larger Humankind regarded as the representation in miniature of the universe.

1010mm x 760mm

\$990

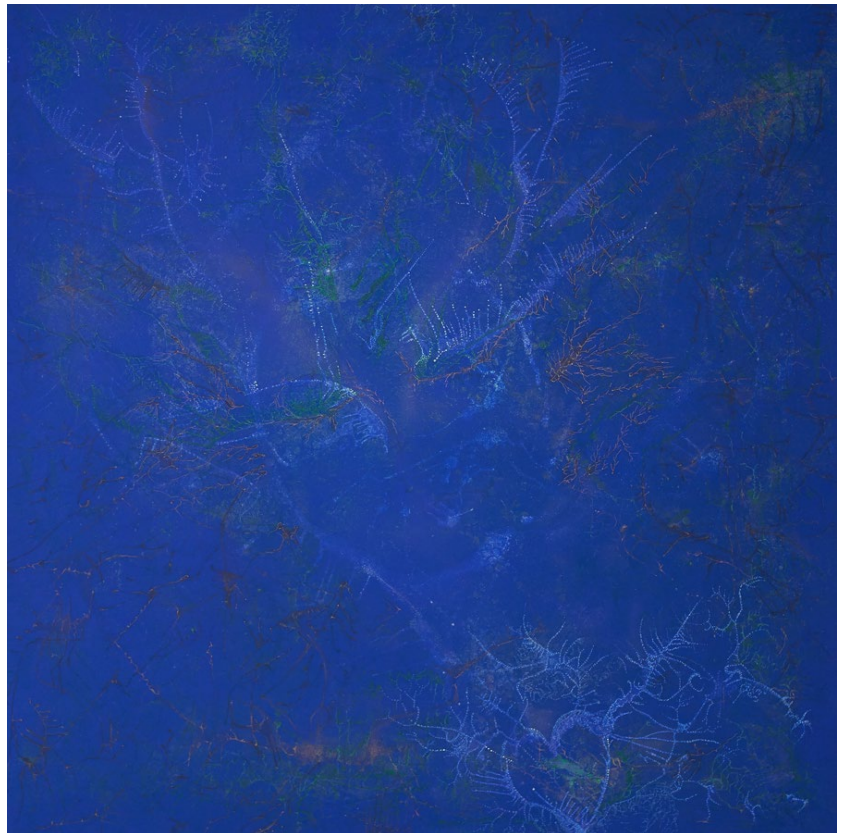


Gia (2)

“Look up into the vastness of the sky and understand that you stand upon Mother Earth in the oneness of all creation.”
– Tracy. R.L. O’Flaherty

1010mm x 1010mm

\$1190



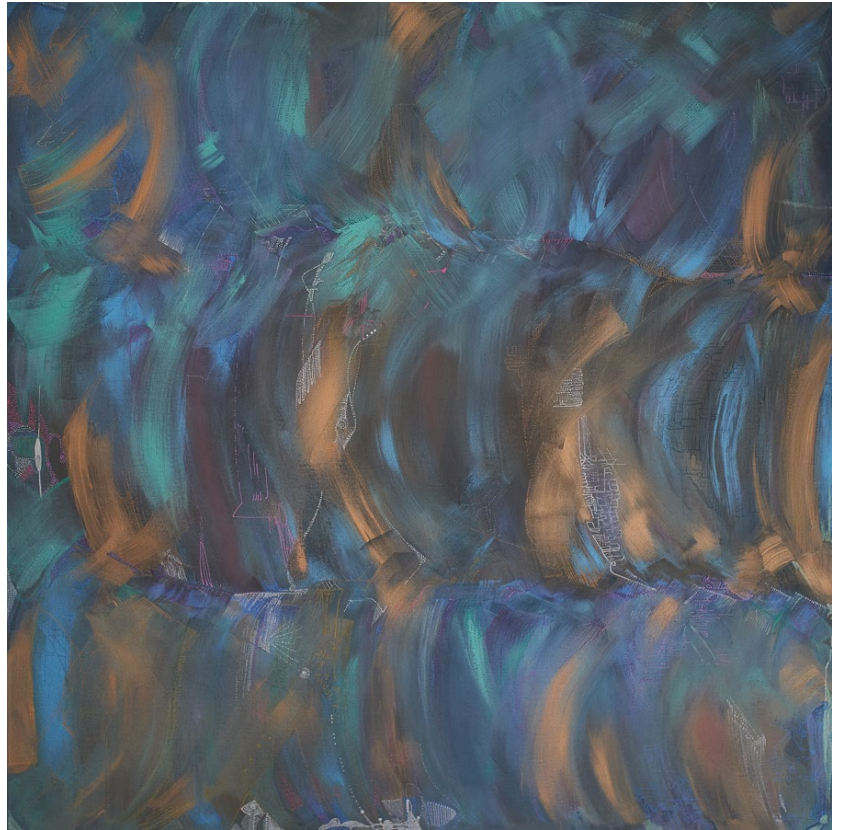
The Inbetween

“Life is not so simple. There are many futures. The life of a single person is like a great tree: every branch, every twig, every leaf is a possible future.” - David Gemmell,

Encapsulating in miniature the characteristics of something much larger Humankind regarded as the representation in miniature of the universe.

1010mm x 1010mm

\$1190



Unknown Galaxy

“Imagination will often carry us to worlds that never were but without it we go nowhere.”
-Carl Sagan

Imagination feeds my creative process and leads me up high into universes unknown, painting their own galaxies.

1010mm x 1010mm

\$1190



The Alchemy of the Sea

“We dream in colours borrowed from the sea” - Anon

I am infinitely fascinated by the depths of the ocean, places like the Mariana Trench hold secrets we have yet to discover, and life forms we can only dream up.

1010mm x 1010mm

\$1190

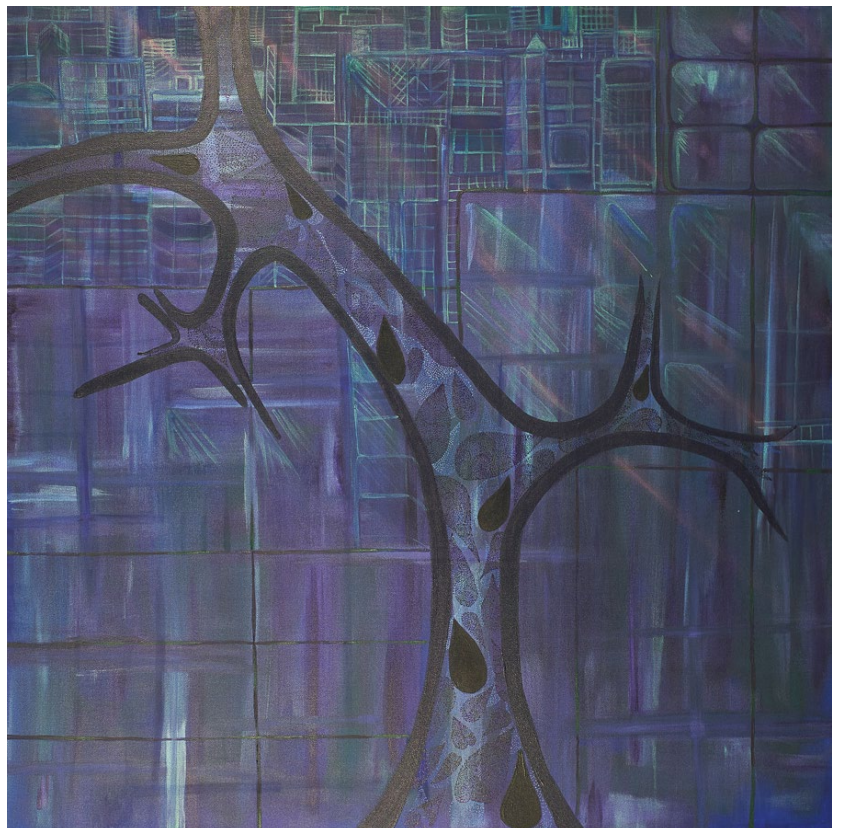


The Watcher in the Window

Shiny city buildings with soaring, mirrored windowpanes, reflect the darkening night sky. A vast, slick city skyline everywhere and anywhere in the world. A solitary form stands watching the last golden rays of the sun. Sadly, remembering the days as a child when city streets were lined with real trees, lush and green. Now long gone. All replaced by holograms.

1010mm x 1010mm

\$1190



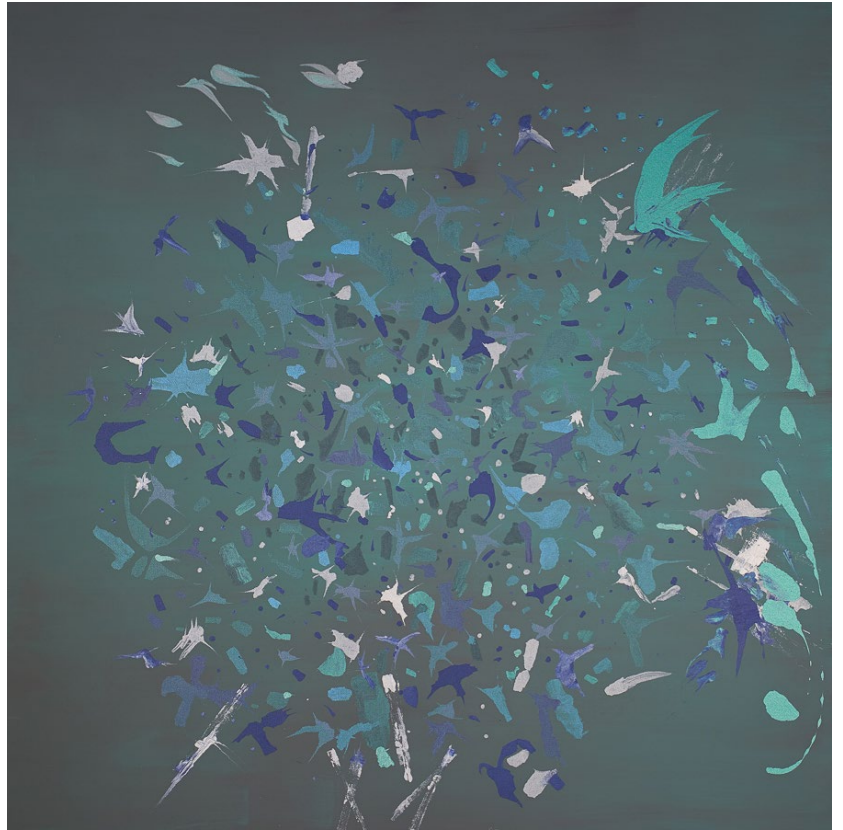
The Travellers (Starlings)

“We are travellers on a cosmic journey, stardust swirling and dancing in the eddies and whirlpools of infinity.”
- Paul Coelho

Each one of us, like Starlings, unique, spiralling upwards into the universe.

1010mm x 1010mm

\$1190



Sediment (Buried Treasures)

Sediment is solid material that is moved and deposited in a new location. It can be as small as a grain of sand or as large as a boulder and moves from one place to another via erosion. It buries its treasures until on the move again.

1010mm x 1010mm

\$1190



Roads Not Yet Taken

“Oh, my ways are strange ways and new ways and old ways. And deep ways and steep ways and high ways and low. I’m at home and at ease on the track that I know not, and restless and lost on a road that I know.”

– Henry Lawson

1010mm x 1010mm

\$1190



Cernunnos, the Lord of the Wild Things

This painting found me during a deep meditation, manifesting before me. At the time I was deeply affected by the bushfires of 2019-20 and the plight and devastation of nature during this catastrophic event.

It reflects my hopes and dreams that the spirit of nature in the Australian bush is ever alive and will not be defeated.

1010mm x 1010mm

\$1190



Ethereal Connection

“Everything starts from a dot”
- Wassily Kandinsky

Connecting the dots creates a bigger integrated picture. A micro world, a magic world. Just as in life.

1010mm x 1010mm

\$1190



The Ephemeral Web

Golden, ghostly, gossamer, wisps inhabit the recesses of my mind. Like some sort of giant mystical web, catching and holding my ideas and thoughts in its grasp

Each one suspended in wait until my brushstrokes bring them to life.

1010mm x 1010mm

\$1190



High Magic

“We wait, starving for moments of high magic to inspire us, but life is full of common enchantment waiting for our Alchemist eyes to notice.”
- Jacob Nordby

1010mm x 1010mm

\$1190



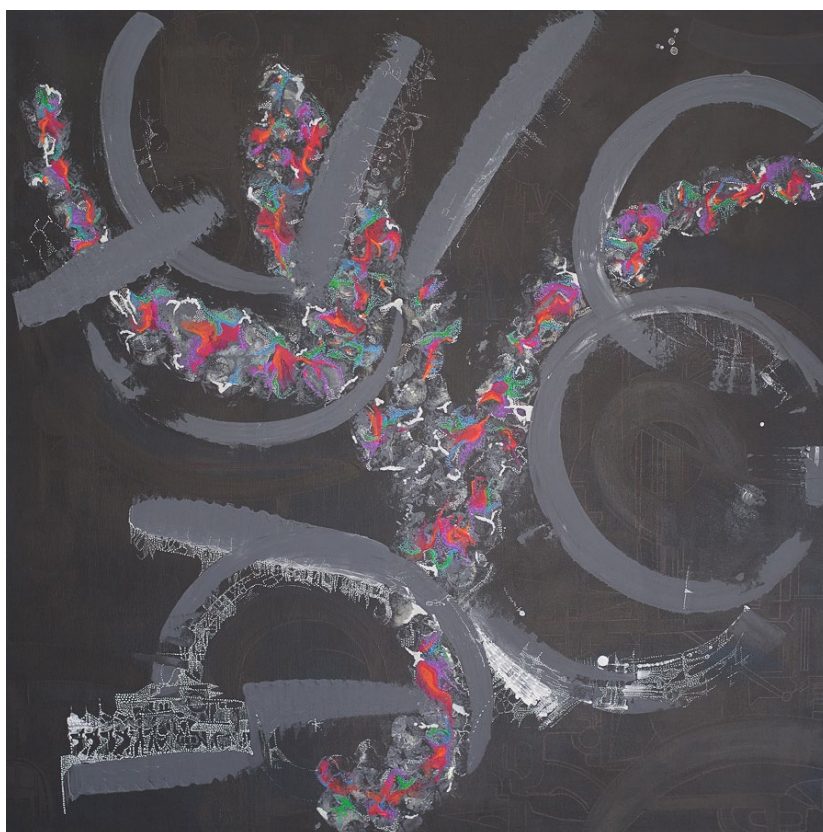
Transformation

“At its essence Art is an Alchemical process. Alchemy is a process of transformation.”
- Julia Cameron

Transformation represents the combining of organic and inorganic.

1010mm x 1010mm

\$1190



Burning of the Concrete Jungle

“When we are finally surrounded by jungles of concrete. Man will start building forests.”

– J. L. (Anon)

1010mm x 1010mm

\$1190



Red Leaf

A simple reminder of Alchemy in the world. It is impossible to duplicate the natural beauty found in our surroundings. Mother nature is our greatest artist.

1010mm x 1010mm

\$1190



Benevolent Eternity

“We are the cosmos made conscious.” – Prof Brian Cox

When painting, I often meditate and rise to connect to the universe. I like to imagine the benevolent face of eternity looking down on me.

1010mm x 1010mm

\$1190

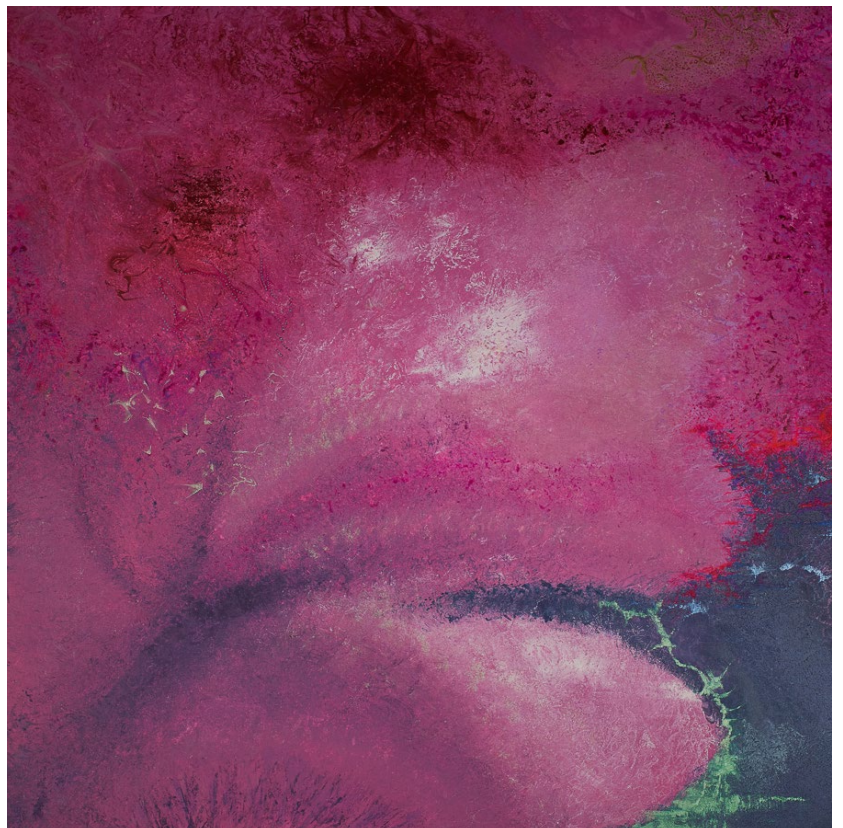


Reminiscing the Future

“I wondered, if I was just the sum of my brain scan, little dots clustered in my frontal lobe. Is that where the poems come from?”
– Betsy Lerner

1220mm x 1220mm

\$1390



Galaxia (All Living Things Are Connected)

“The real voyage of discovery consists not in seeking new landscapes but in having new eyes.”
– Marcel Proust

The Alchemy of the universe.

1220mm x 1220mm

\$1390



Fossils Awakening

“Our bones like stems into the sky will forever cry.” - Charles Bukowski

1220mm x 1220mm

\$1390



The Loom of Life

“We sleep, but the loom of life never stops, and the pattern which was weaving when the sun went down is weaving when it comes up in the morning.”

- Henry Ward Beecher

1220mm x 1220mm

\$1390



As Above, So Below

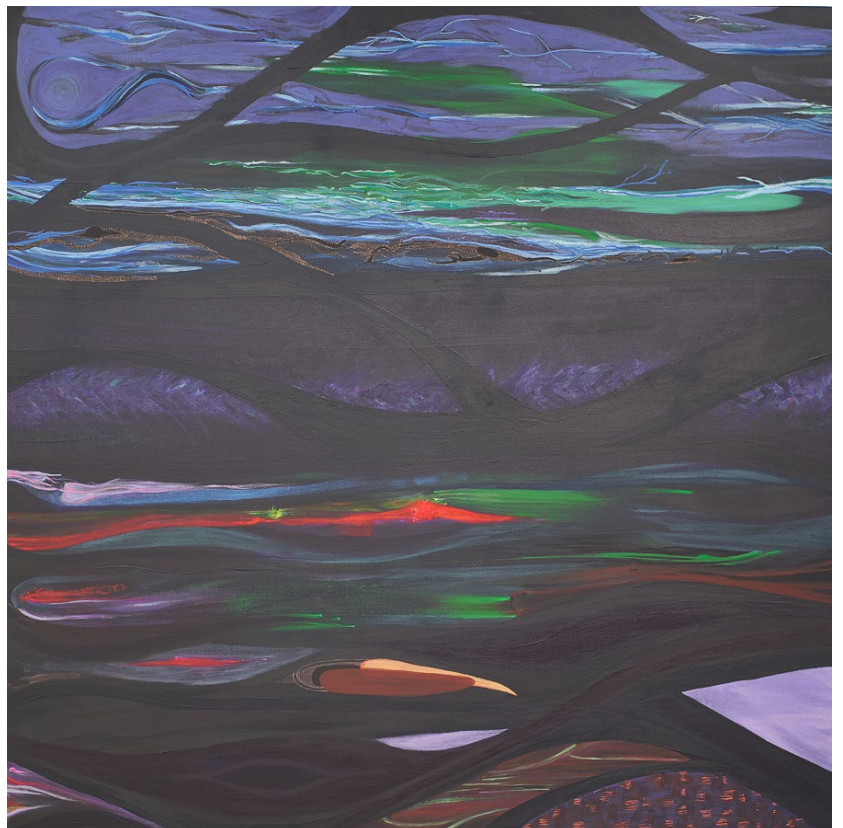
“As above so below. As within so without. As with the universe so with the soul.”

- Hermes Trismegistus

In this work I've tried to express the connectivity and oneness with the earth. This painting is designed to be flipped.

1220mm x 1220mm

\$1390



Amoeba

Amoeba proteus, is found on decaying bottom vegetation of freshwater streams and ponds.

1010mm x 760mm

\$990

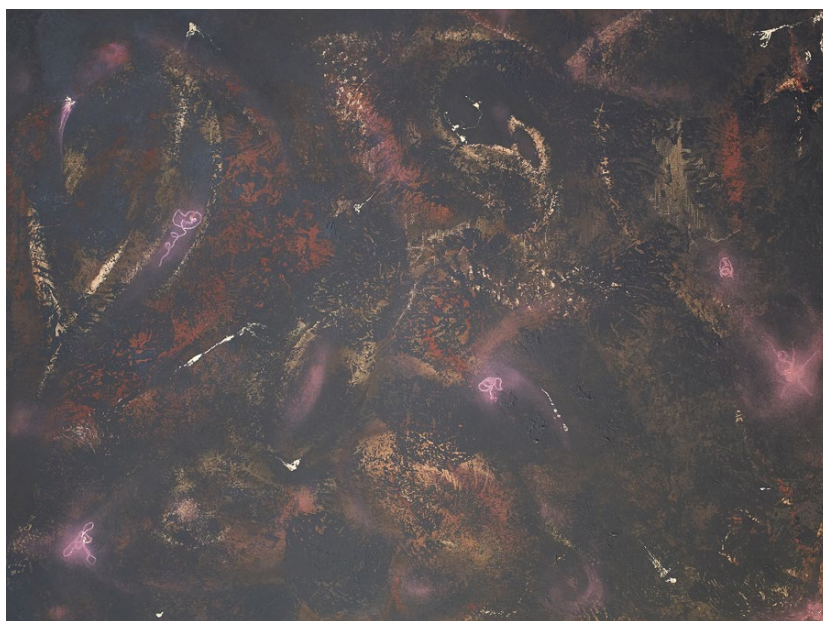


Embers

While meditating during the fires of 2020 I visualised myself as bird soaring above the scorched earth, distressed, searching for a refuge to land. The terrifying beauty of the vivid embers, once my home, as far as the eye can see.

1010mm x 760mm

\$990



Solve et Coagula

From the seven stages of spiritual alchemy means to “dissolve and coagulate” resulting in bringing back together into higher form.

1010mm x 870mm

\$1090



Begin

“The power of imagination created the illusion that my vision went much farther than the naked eye could actually see.” - Nelson Mandella

1010mm x 1520mm

\$1490



My Distant Dreams of Earth

“May all your dreams but one come true, for what is life without a dream?” David Gemmell

600mm x 500mm

\$590



Pera Hara Fire Dancers

The Esala Perahara is an ancient Buddhist festival held in Kandy, Sri Lanka to honour The Buddha. Whilst a Buddhist festival, it also incorporates Hindu elements. Part of the procession involves fire dancers, walkers, and twirlers. I wanted to convey the euphoric, mystical atmosphere that imbues this event.

1220mm x 610mm

\$1090



Space Omega

“These worlds in space are as countless as all the grains of sand on all the beaches of the earth.”
Carl Sagan

1220mm x 610mm

\$1090



The Road Less Travelled

“One’s destination is never a place, but a new way of seeing things”
Henry Miller. This work was inspired by the view of Earth from above

1010mm x 1520mm

\$1490



The Sounds of Silence

“Even though I am nearly deaf, I seem to be gifted with a kind of inner hearing which enables me to detect sounds and noises which the ordinary person does not hear.”
Thomas A Edison. Sound in layers.

610mm x 1220mm

\$1090



Together We Shine

“As we work to create light for others, we naturally light our own way.” Mary Anne Radmacher.
The inspiration for this work was a need to believe in the positive, and collective source that’s entrenched in human nature. The source of light that is our birthright.

1010mm x 1520mm

\$1490



The Buds of a New Beginning!

The zinnia flower was grown in orbit on the international space station by NASA. The first bud bloomed on January 12, 2016. While grown in space, the flowers originate and continue to bloom on our planet.

This little bud represents a moment in time where mankind first grew a flower in space.

1010mm x 1520mm

\$1490

