

aMBUSH's Curated Guide to Sydney



Sydney

Australia's most famous city - Sydney is a cosmopolitan powerhouse surrounded by iconic beaches and world heritage sites. However, there is so much more to it than just the undeniably impressive Sydney Opera House or Sydney Harbour Bridge. The city's vibrant dining scene, golden sand and vigorous cultural venues ensure visitors come back. At every turn new rooftop bars, theatre shows and designer shops are popping up, displaying that this is a city that is constantly evolving.

There is a distinct personality associated with every neighborhood. Surry Hills is a vibrant and thriving creative scene; the aqua blue waters and the golden sands of Bondi Beach belong to the surfers and the central business district lends Sydney barely a hint of corporate ambiance.

However, Sydney has many more enchanting layers to discover. Cultural diversity, heritage, and passion for arts and sports are all celebrated within this city. A temperate climate makes Sydney spectacular at any time of the year, and the city's friendly, casual attitude continues to bring visitors back for more.

This curated guide provides an abundance of exciting and local eateries and bars, cool and contemporary hotels to satisfy all as well as iconic outdoor adventures that are hard to match anywhere else in the world! These are all must-do's when visiting this unbelievable city.

Explore [Visit NSW](#) for more city info.

Front page source: Enzo Amato Photography - HERE I AM at Darling Quarter

Front page artists: Elizabeth Close and Konstantina

Art & Culture

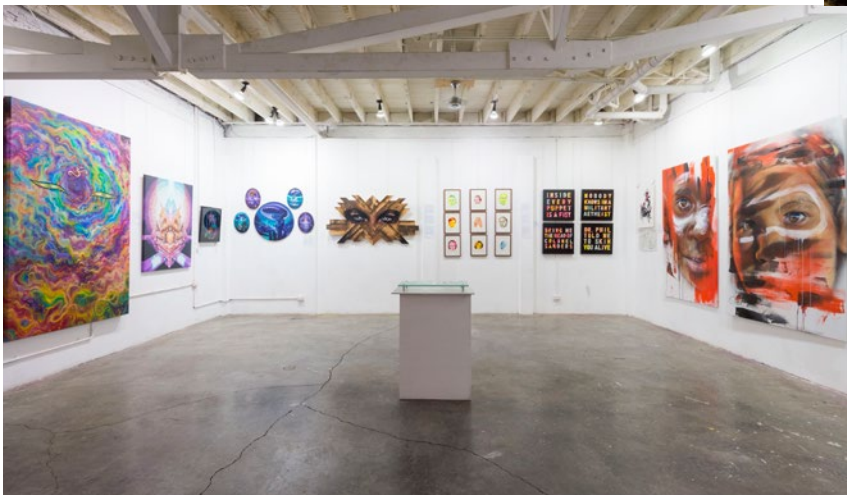


Source: White Rabbit Gallery

aMBUSH Gallery

James St, Waterloo

aMBUSH Gallery have been a vital facet of the Australian cultural scene since their inception in 2007. From their original space in inner Sydney, they continue to produce innovative and culturally progressive creative initiatives, seeking to educate and engage new audiences.



Source: Enzo Amato - aMBUSH Gallery

Olsen Gallery

- Jersey Rd. Woollahra

-Queen St. Woollahra

Olsen Gallery exhibits a broad spectrum of Australian and international art. The space has cultivated a stable of artists that presents a comprehensive and poignant view of the contemporary arts in Australia. With a continually changing exhibition calendar they showcase the work of both emerging and established artists.

White Rabbit Gallery

- Balfour Street, Chippendale

The White Rabbit Gallery's four floors of vibrantly, original, thought-provoking art showcases what has become one of the world's most significant collections of Chinese contemporary art.

The works on show at any one time include painting, photography, sculpture, video art, drawing and installations. The gallery also features a mini cinema, bookshop and café, and is a short drive away from aMBUSH Gallery.



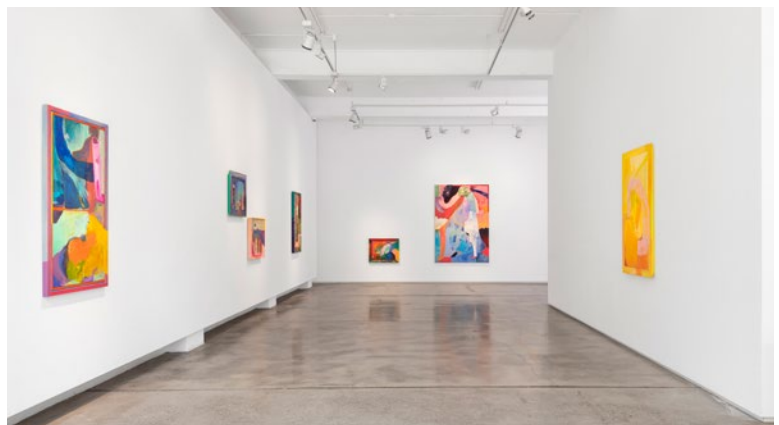
Source: Enzo Amato - aMBUSH Gallery

Sullivan + Strumpf

- Elizabeth St, Zetland

Sullivan + Strumpf is one of Asia-Pacific's leading contemporary art galleries, representing the most engaging Australian and international artists of our time, and is within an earshot of aMBUSH Gallery.

The gallery presents an ambitious program of diverse exhibitions, publications and talks, and an international art fair schedule.



Source: Sullivan and Strumpf Sydney // Karen Black, It's Not Real. Credit Mark Pokorny

Art & Culture

China Heights Gallery

- Foster Street, Surry Hills

China Heights was established in 2004 and sits somewhere between art gallery and contemporary conceptual space.

The gallery focuses on nurturing emerging talent whose work straddles the art and design realms. This has resulted in many numerous public projects, independent installations, and commercial commissions that have contributed to Australia's contemporary art scene.



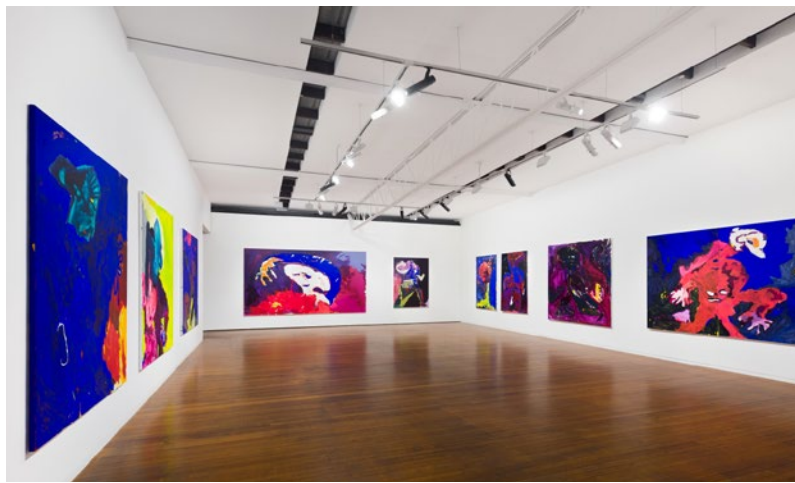
Source: China Heights Gallery

Roslyn Oxley9 Gallery

- Soudan Lane, Paddington

Established in Sydney in 1982, Roslyn Oxley9 Gallery has a rich history of supporting contemporary art, having fostered the careers of some of the most influential Australian artists working today.

As one of the most well-established Australian commercial art galleries, Roslyn Oxley9 Gallery has been exhibiting at international art fairs for more than 25 years and is committed to presenting a diverse schedule of exhibitions by international artists.



Source: Roslyn Oxley9

Art Gallery of New South Wales

- Art Gallery Road, Sydney

2022 is an exciting year for the Art Gallery of NSW as its Sydney Modern Project expansion is completed. A new building, art garden and revitalisation of the historic building will almost double the exhibition space of one of Australia's most popular art museums.

Adjacent to the Royal Botanic Garden within beautiful parklands overlooking Sydney Harbour, visitors can enjoy an extensive collection of Australian art, including an internationally renowned collection of Aboriginal art, alongside European masters, Asian treasures and local and international contemporary art.



Source: Sydney Modern Project as produced by Kazuyo Sejima + Ryue

Nishizawa / SANAA © Art Gallery of New South Wales, 2021

Food and Bev

Went to See the Gypsy

- Mitchell Street, Alexandria

An Alexandria specialty coffee hot-spot with a state-of-the-art brew bar. A specialty coffee bar with breakfast dishes, lunch plates and a handful of all-day offerings in between, kitted out with state-of-the-art equipment, the sprawling warehouse space is a true caffeine-lover's oasis that is run by Gypsy Coffee Roasters.



Source: Gypsypresspresso

Bread & Circus

- Fountain Street, Alexandria

Bread & Circus is a healthy and delicious little nook that draws quite a crowd of regulars with its healthy, veg-centric, options and market-influenced fare. Poked into the sunny back corner of a mini foodie precinct, the warehouse is an ideal space for this relaxed eatery.



Source: Bread Circus



The Perfect Bite



Source: The Grounds of Alexandria

The Grounds of Alexandria

- Huntley Street, Alexandria

The Grounds of Alexandria is a sprawling cafe, restaurant, bar, coffee roastery, bakery, florist, market and farm all in one; with so much on offer, it's the perfect place for a day out.

The Grounds is an innovative, sustainable specialty coffee outfit combining science, industrialism and organic gardens into one awe-inspiring space, with a brilliant menu.



Source: Ester

Ester

- Meagher Street, Chippendale

A chic restaurant tucked away in Chippendale. A wood fired oven spurs much of the menu, with everything from crab to cauliflower feeling the blaze at some point during cooking. The eclectic wine list is short but sweet.

Into the Night

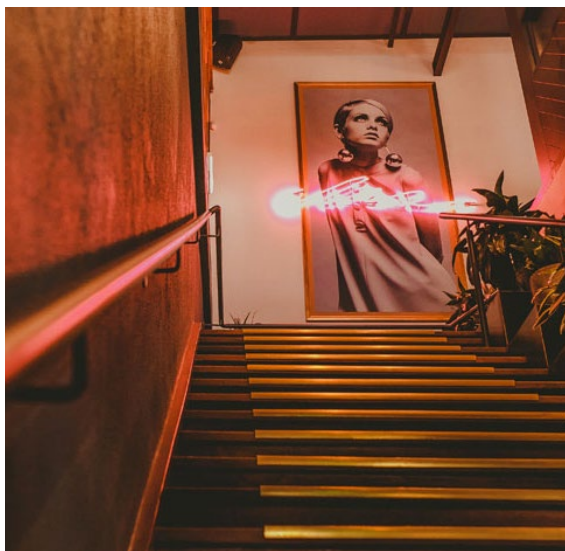
Dead Ringer

- Bourke Street, Surry Hills

Dead Ringer has delightfully imaginative cocktails, as well as a seasonal food menu, an interesting and ever-changing wine list, plus an all-Australian selection of beer and cider. And all this in an elegant, neighbourhood-bar setting.



Source: Nomad



Source: Hidden City Secrets - Misfits

Misfits

- George Street, Redfern

Misfits is your local oasis. A place where a melting pot of locals and visitors, catch up for a good time. Nestle yourself into a booth by the bar, cosy up by the fire in the cocktail lounge or hang out in the glasshouse courtyard amongst the lush greenery.



Source: Dead Ringer

Nomad

- Foster Street, Surry Hills

Some of the world's finest produce and Australia's best wine is found here. Nomads source the best produce from small growers who share that passion. Nomad cook with fire and smoke, which is inspired by their travels through Spain, Morocco and the Middle East.

Bondi to Bronte Walk

- Eastern Suburbs

One of the most iconic coastal walking trails in Sydney, this 2.5km walk has a combination of beaches parks and breathtaking panoramic views of the ocean and sandstone cliffs.



Bondi to Bronte walk brunch spots

The Bondi Icebergs Terrace is the ultimate spot for you to enjoy your meal and the ocean. Also, upon reaching the end of the walk at Bronte Road is a strip of must try cafés such as Bronte Belo and Café Salina that overlook Bronte beach.



Source: Unsplash - Bondi Icebergs and Mackenzies Bay

Eastern Suburbs

Sydney's Eastern Suburbs are spoilt for choice with Bondi, Tamarama, Bronte, Clovelly and Coogee all within an earshot of one another. All of these beaches also have a large grassy areas - perfect for picnics.



Source: Unsplash - Tamarama Beach

Glebe Foreshore Walk

- Inner City

The Glebe Foreshore Walk from Bicentennial Park to the Sydney Fish Markets at Pyrmont, links over 27 hectares of open space and gives visitors unimpeded public access to Rozelle Bay and Blackwattle Bay.

The walk stretches 2.2km and is great for Sydney Harbour and parklands views, as well as picnics.



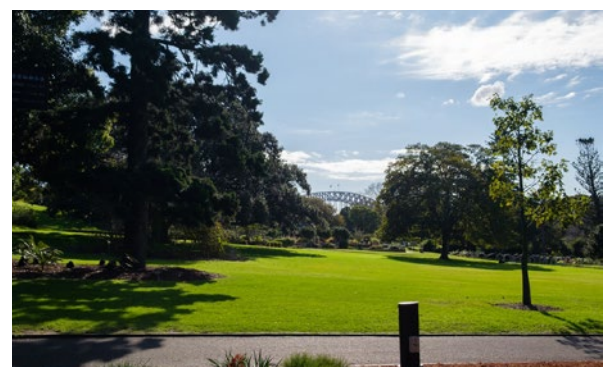
Source: Unsplash - Glebe Foreshore (Anzac Bridge)

Domain Walking Track

- City, CBD

Walk or cycle past the Art Gallery of NSW and through the Royal Botanic Garden with offerings of the Opera House, Sydney Harbour Bridge and Woolloomooloo as your backdrop.

This track is around 3km and allows you to explore Sydney's most exceptional landmarks within the city.



Source: Unsplash - Royal Botanic Garden

Accommodation

The Old Clare Hotel

Kensington St, Chippendale

Stretching across two iconic heritage-listed buildings – The Clare Hotel pub and the Carlton & United Breweries Administration Building – the 69-room boutique hotel has been constructed with obsessive attention to aesthetics and concern for retaining the interesting features of the heritage buildings it resides in.



Source: Paramount House Hotel

Veriu Green Square

Green Square, Alexandria

Whether you're looking to explore the neighbourhood or simply switch off, Veriu Green Square hotel is where your inner-city sojourn begins. The Veriu team will get you connected, sleeping sound and energised by Green Square's community and culture. This uniquely vibrant accommodation in Alexandria suits the way you want to explore, and is only walking distance from aMBUSH Gallery! Use the code AMBUSHG when booking to receive a discounted rate.



Source: QT Sydney



Source: The Old Clare Hotel

Paramount House Hotel

Commonwealth St, Surry Hills

Paramount House mixes heritage details, contemporary updates and a modern palette of concrete, terrazzo and timber. Below there's acclaimed wine bar, Poly. There's also a rooftop health club and outdoor garden café called Paramount Recreation Club.



Source: Veriu Hotel

QT Sydney

Sydney, CBD

Layers of time make QT Sydney a one of a kind experience. Reinvention. Exploration, the wild geography of a colourful life. The hotel is a moment. Right place, right time, a twinkle in the Emerald City. Part art deco masterpiece, part heritage theatre.

QT Sydney is a dramatic flourish on Market St., a corner-of-the-eye promise. Blink and you'll miss it. Seize the chance, and come find your new niche in the city.

Shopping

Crown Street

Surry Hills

There's something special about wandering the streets of Surry Hills. Long one of Sydney's cultural hubs, the suburb boasts a vibrant collection of small businesses that have basically everything you could need and/or want. A few go to stores include - [Collector Store](#), [Reddie](#) and [Title Store](#)



Source: The Standard Store - Surry Hills



Source: Sydney.com - Oxford Street

Oxford Street

Darlinghurst - Paddington

Synonymous with style and a prominent well-to-do vibe Oxford Street is arguably the most fashionable place in the city. There are also a bunch of hidden gems along the side streets where shoppers can pick up edgy pieces of jewellery, art and offbeat fashion from Australian and international designers.



Source: haloprintco

King Street

Newtown

If vintage is more your thing, you'll be rewarded with fantastic finds along King Street. Known as Sydney's top vintage fashion destination, local Newtown boutiques offer a range of remarkable stores and have plenty of opportunity to find new additions to your wardrobe.

Transport

Flying to Sydney takes 1.5 hours from Melbourne and 55 minutes from Canberra. Driving from Melbourne takes 9 hours while travelling by car from Canberra takes 3.5 hours.

Bus

Murrays offers a frequent Canberra - Sydney (return) bus service. Departing from Jolimont bus station in Canberra's CBD the buses arrive at both the Sydney Domestic Terminal and Sydney Central Station. Tickets are priced around \$45 and the trip takes 3.5 hours. Services run every hour.

Train

Modern trains are well-equipped, comfortable, and will take you from Canberra Kingston station to Sydney railway station in 4.5 hours
Tickets are \$50

Bus

Both [Greyhound](#) and [Firefly Express](#) Buses provided convenient and comfortable overnight transit from Melbourne to Sydney. Fares range from \$65 for Firefly and \$105 for Greyhound. The trip usually takes 12 hours

Train

One of the most comfortable ways to travel between the two cities, this trip will take between 11-12 hours. Tickets are \$154

Melbourne

Canberra

Contact Details

aMBUSH Gallery

Address:

4a James Street, Waterloo,
NSW 2017

Phone:

(02) 8399 0707

Opening Hours:

Friday to Sunday from 12pm to 4pm -
only when an exhibition is showing

Open at Darling Quarter

Address:

1 Harbour Street, Sydney NSW 2000

Opening Hours:

24/7 – only when an exhibition is
showing
